

Cisco 2600XM DSL Router Bundles

Overview

In order to provide customers with easy-to-order solutions to meet their Digital Subscriber Line (DSL) networking needs, six DSL router bundles are available based on the Cisco 2600XM modular multiservice router platforms.

Figure 1
Cisco 2600XM Series Routers

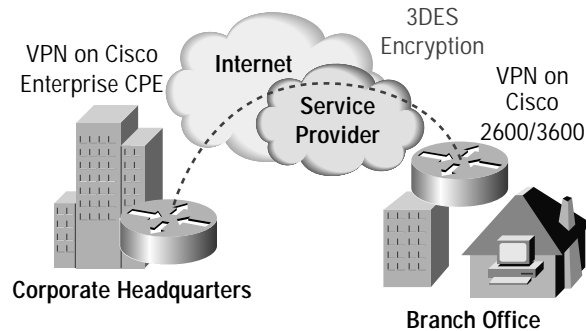


These DSL bundles greatly simplify customer ordering. Using only one part number, customers can order a Cisco 2600XM router with all the necessary components at a reduced price compared to ordering each component separately. Each DSL bundle can also be ordered with additional WAN Interface Cards (WICs), Network Modules (NMs), and Advanced Integration Modules (AIMs). The DSL bundles are available in both Asymmetric DSL (ADSL) and Symmetric HighSpeed DSL (SHDSL) versions.

These bundles offer customers the ability to deploy high speed WAN access to businesses while offering advanced services such as Virtual Private Networks (VPNs) and Voice over DSL (VoDSL).



Figure 2
Secure VPN Through the Internet Over DSL



Features at a Glance

Cisco 2611XM-ADSL Router Bundle includes:

- Dual Fast Ethernet Router with 2 WAN Interface Card (WIC) Slots and 1 NM Slot
- Memory upgrade for both Flash and DRAM: (32-MB Flash and 128-MB DRAM)
- Cisco IOS Software: Cisco IOS SP Services
- WIC-1ADSL

Cisco 2621XM-ADSL Router Bundle includes:

- Dual Fast Ethernet Router with 2 WAN Interface Card (WIC) Slots and 1 NM Slot
- Memory upgrade for both Flash and DRAM: (32-MB Flash and 128-MB DRAM)
- Cisco IOS Software: Cisco IOS SP Services
- WIC-1ADSL

Cisco 2651XM-ADSL Router Bundle includes:

- Dual Fast Ethernet Router with 2 WAN Interface Card (WIC) Slots and 1 NM Slot
- Memory upgrade for both Flash and DRAM: (32-MB Flash and 128-MB DRAM)
- Cisco IOS Software: Cisco IOS SP Services
- WIC-1ADSL

Cisco 2611XM-SHDSL Router Bundle includes:

- Dual Fast Ethernet Router with 2 WAN Interface Card (WIC) Slots and 1 NM Slot
- Memory upgrade for both Flash and DRAM: (32-MB Flash and 128-MB DRAM)
- Cisco IOS Software: Cisco IOS SP Services
- WIC-1SHDSL-V2

Cisco 2621XM-SHDSL Router Bundle includes:

- Dual Fast Ethernet Router with 2 WAN Interface Card (WIC) Slots and 1 NM Slot
- Memory upgrade for both Flash and DRAM: (32-MB Flash and 128-MB DRAM)

Cisco Systems, Inc.

All contents are Copyright © 1992–2004 Cisco Systems, Inc. All rights reserved. Important Notices and Privacy Statement.

Page 2 of 6

- Cisco IOS Software: Cisco IOS SP Services
- WIC-1SHDSL-V2

Cisco 2651XM-SHDSL Router Bundle includes:

- Dual Fast Ethernet Router with 2 WAN Interface Card (WIC) Slots and 1 NM Slot
- Memory upgrade for both Flash and DRAM: (32-MB Flash and 128-MB DRAM)
- Cisco IOS Software: Cisco IOS SP Services
- WIC-1SHDSL-V2

These six distinct bundles were created to ease ordering while still giving customers maximum choice in performance, DSL interfaces, memory, and price points. The below table quickly summarizes the differences in the various Cisco 2600XM DSL bundles.

Table 1 DSL 2600XM Bundles

Bundle	Router	IOS Image	WAN Interface Card	Fast Ethernet Ports	Flash (MB)	DRAM (MB)	Router Performance (kpps)
CISCO2611XM-ADSL	2611XM	SP Services	WIC-1ADSL	2	32	128	20kpps
CISCO2621XM-ADSL	2621XM	SP Services	WIC-1ADSL	2	32	128	30kpps
CISCO2651XM-ADSL	2651XM	SP Services	WIC-1ADSL	2	32	128	40kpps
CISCO2611XM-SHDSL	2611XM	SP Services	WIC-1SHDSL-V2	2	32	128	20kpps
CISCO2621XM-SHDSL	2621XM	SP Services	WIC-1SHDSL-V2	2	32	128	30kpps
CISCO2651XM-SHDSL	2651XM	SP Services	WIC-1SHDSL-V2	2	32	128	40kpps

DSL Bundle Features and Benefits

DSL helps companies reap the benefits of dramatically lowered WAN costs, improved global connectivity, and high reliability, while providing sufficient bandwidth to combine such critical traffic as voice and video with data. Additionally, service providers can increase their subscriber revenues by bundling services and by offering differentiated service levels through Service Level Agreements (SLAs).

Cisco 2600XM Routers

The Cisco 2600XM modular multiservice access routers are ideal for DSL connectivity. They deliver a rich, integrated package of routing, firewall, dial, Packet Voice Gateway and VPN functions. The Cisco 2600 series together with the ADSL or SHDSL WAN Interface Modules (WICs) are the perfect solution for a variety of businesses requiring high-speed business-class DSL connectivity on a secure, high-performance modular platform.

ADSL WIC (WAN Interface Card)

The WIC-1ADSL included with the 2600XM-ADSL Router Bundles is based on the ITU G.992.1 (G.dmt) and ITU G.992.2 (G.lite) standards. The ADSL WIC operates at speeds of up to 8Mbps downstream and 1.5Mbps upstream. Multiple ADSL WICs can be provisioned per 2600XM to provide even higher bandwidth or WAN backup. The WIC-1ADSL with the 2600XM supports a variety of ATM QoS mechanisms. These included Class of Service (CoS) features Constant Bit Rate (CBR), Variable Bit Rate (VBR) in real time and non real time, and Unspecified Bit Rate (UBR). In addition support for a variety of IP QoS mechanisms is also be available.

SHDSL WIC (WAN Interface Card)

The WIC-1SHDSL-V2 included with the 2600XM-SHDSL Router Bundles is based on the ITU G.991.2 standard. The SHDSL WIC operates at symmetric speeds of up to 2.3Mbps over a single copper pair and 4.6Mbps over two copper pairs. Multiple SHDSL WICs per 2600XM can be provisioned for extra bandwidth or WAN backup. Additionally, the SHDSL WICs can operate back-to-back for campus environments. The WIC-1SHDSL-V2 with the 2600XM supports an identical set of ATM and IP QoS mechanisms as are available with the WIC-1ADSL with the 2600XM.



Integrated Voice and Data over DSL

Service providers and enterprise customers alike continue to expand deployment of voice services to remote customers. While more traditional technologies require separate data and voice systems, advanced QoS mechanisms merged with high-bandwidth WAN links like DSL make it possible to effectively combine voice and data traffic in the same WAN connection without sacrificing quality or reliability. Traffic management is key for this type of deployment. The Cisco 2600XM Series with a DSL WAN Interface Card currently supports a variety of ATM QoS mechanisms and IP QoS mechanisms, providing a scalable and manageable solution for toll-quality voice transmission while still maintaining ample data service. Specific benefits:

- Service providers increase revenue by building differentiated service options based on premium, standard, or best-effort service classes
- Enterprise customers reduce costs and increase service offerings to their remote branch offices by delivering voice connectivity without the high costs of dedicated voice links

Note: ADSL technology also inherently allows for the transmission of a single basic telephone service voice connection and traditional data traffic over the same pair of wires without the need for QoS. The WIC-1ADSL supports both splitter and splitterless (G.lite) modes for insertion into almost any ADSL environment when only a single basic phone line is needed.

Business-Class Security

The Cisco 2600XM Series can be optimized for VPNs, which allow for secure use of any shared network incorporating the same policies and levels of security and performance as a private network. VPN security can be delivered through hardware-based encrypted tunneling at 3DES IP Security (IPSec) speeds of up to 40 Mbps. This allows customers to deploy ADSL or SHDSL for secure remote access to corporate networks without the high costs and limitations often associated with point-to-point links. The 2600XM DSL bundles are equipped with extra memory to ease customers to deployment of VPN services.

In addition, the Cisco 2600XM Series incorporate Cisco IOS Firewall technology (CiscoSecure Integrated Software) supporting stateful firewall and intrusion detection. With an always-on DSL connection, Internet security is a critical component in protecting corporate resources from malicious attacks.

Deployment Flexibility

Many businesses today require data and voice connectivity between multiple buildings in a campus environment. Often copper wire is the only means to interconnect each facility to a campus' main building. G.shdsl technology allows customers to link two Cisco 2600/3700s with WIC-1SHDSL-V2 cards back-to-back over standard 26 AWG telephone wire and provide up to 4.6-Mbps WAN connectivity between the two sites. This enables deployment of data, voice, and video over existing copper wire without a costly infrastructure upgrade. Multiple WIC-1SHDSL-V2 pairs can be used to allow for additional bandwidth between locations.



Figure 3
Back-to-back G.shdsl deployment in a campus environment

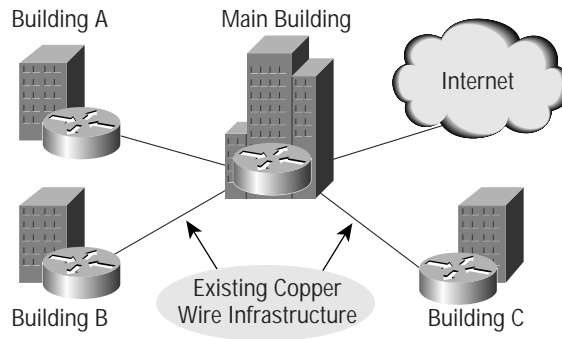


Table 2 DSL Bundle Ordering Information

Cisco Part Number	Description
ADSL WIC Bundle	
CISCO2611XM-ADSL	2611XM ADSL Bundle, WIC-1ADSL, 2FE, SP Services, 32FLASH, 128DRAM
CISCO2621XM-ADSL	2621XM-ADSL Bundle, WIC-1ADSL, 2FE, SP Services, 32FLASH, 128DRAM
CISCO2651XM-ADSL	2651XM-ADSL Bundle, WIC-1ADSL, 2FE, SP Services, 32FLASH, 128DRAM
SHDSL Bundles	
CISCO2611XM-SHDSL	2611XM SHDSL Bundle, WIC-1SHDSL-V2, 2FE, SP Services, 32FLASH, 128DRAM
CISCO2621XM-SHDSL	2621XM-SHDSL Bundle, WIC-1SHDSL-V2, 2FE, SP Services, 32FLASH, 128DRAM
CISCO2651XM-SHDSL	2651XM-SHDSL Bundle, WIC-1SHDSL-V2, 2FE, SP Services, 32FLASH, 128DRAM

Summary

The Cisco 2600XM bundles allow Enterprise and Service Providers to easily deploy the popular Cisco 2600XMs routers as DSL CPE and to take advantage of the incredible flexibility these platforms offer.

The Cisco 2600XM bundles are a great complement to the Cisco SOHO, 800, and 1700 DSL bundles also available from Cisco extending the range of functionality and price points available to the DSL CPE buyer.

For further information see:

- 2600XM

<http://www.cisco.com/en/US/products/hw/routers/ps259/index.html>

- DSL

http://www.cisco.com/en/US/products/hw/routers/ps259/prod_bulletin09186a00800c3235.html

http://www.cisco.com/en/US/products/hw/routers/ps259/products_relevant_interfaces_and_modules.html



Corporate Headquarters

Cisco Systems, Inc.
170 West Tasman Drive
San Jose, CA 95134-1706
USA
www.cisco.com
Tel: 408 526-4000
800 553-NETS (6387)
Fax: 408 526-4100

European Headquarters

Cisco Systems International BV
Haarlerbergpark
Haarlerbergweg 13-19
1101 CH Amsterdam
The Netherlands
www-europe.cisco.com
Tel: 31 0 20 357 1000
Fax: 31 0 20 357 1100

Americas Headquarters

Cisco Systems, Inc.
170 West Tasman Drive
San Jose, CA 95134-1706
USA
www.cisco.com
Tel: 408 526-7660
Fax: 408 527-0883

Asia Pacific Headquarters

Cisco Systems, Inc.
Capital Tower
168 Robinson Road
#22-01 to #29-01
Singapore 068912
www.cisco.com
Tel: +65 6317 7777
Fax: +65 6317 7799

Cisco Systems has more than 200 offices in the following countries and regions. Addresses, phone numbers, and fax numbers are listed on the Cisco Web site at www.cisco.com/go/offices

Argentina • Australia • Austria • Belgium • Brazil • Bulgaria • Canada • Chile • China PRC • Colombia • Costa Rica • Croatia • Czech Republic • Denmark • Dubai, UAE • Finland • France • Germany • Greece • Hong Kong SAR • Hungary • India • Indonesia • Ireland • Israel • Italy • Japan • Korea • Luxembourg • Malaysia • Mexico • The Netherlands • New Zealand • Norway • Peru • Philippines • Poland • Portugal • Puerto Rico • Romania • Russia • Saudi Arabia • Scotland • Singapore • Slovakia • Slovenia • South Africa • Spain • Sweden • Switzerland • Taiwan • Thailand • Turkey • Ukraine • United Kingdom • United States • Venezuela • Vietnam • Zimbabwe

All contents are Copyright © 1992–2004 Cisco Systems, Inc. All rights reserved. CCIP, CCSP, the Cisco Arrow logo, the Cisco *Powered* Network mark, Cisco Unity, Follow Me Browsing, FormShare, and StackWise are trademarks of Cisco Systems, Inc.; Changing the Way We Work, Live, Play, and Learn, and iQuick Study are service marks of Cisco Systems, Inc.; and Aironet, ASIST, BPX, Catalyst, CCDA, CCDP, CCIE, CCNA, CCNP, Cisco, the Cisco Certified Internetwork Expert logo, Cisco IOS, the Cisco IOS logo, Cisco Press, Cisco Systems, Cisco Systems Capital, the Cisco Systems logo, Empowering the Internet Generation, Enterprise/Solver, EtherChannel, EtherSwitch, Fast Step, GigaStack, Internet Quotient, IOS, IP/TV, iQ Expertise, the iQ logo, iQ Net Readiness Scorecard, LightStream, MGX, MICA, the Networkers logo, Networking Academy, Network Registrar, *Packet*, PIX, Post-Routing, Pre-Routing, RateMUX, Registrar, ScriptShare, SlideCast, SMARTnet, StrataView Plus, Stratm, SwitchProbe, TeleRouter, The Fastest Way to Increase Your Internet Quotient, TransPath, and VCO are registered trademarks of Cisco Systems, Inc. and/or its affiliates in the U.S. and certain other countries.

All other trademarks mentioned in this document or Web site are the property of their respective owners. The use of the word partner does not imply a partnership relationship between Cisco and any other company.
(0304R) ETMG 203203—CC 01.04